

ADAL HOME COMPANY LIMITED

No.2 str. 7, quarter 4, An Phu ward, dist. 2, HCMC, Vn.
(+84) 28 6271 3917 - Hotline: (+84) 901 189 896
www.adalhome.vn - Fanpage / Youtube
box@adalhome.vn - sales@adalhome.vn



Installation Manual

Content

Introduction	3
Prepare	4
Coating	5
Cutting	6
Applying Glue	6
Tape on	7
Fixtures	7

Introduction

Art Stone® product line is one of the most exciting innovative building materials across the globe in modern history. They are finely thin stone layers with durable polyester resin and glass fibre on the back, which are just sufficient to show the beautiful native stone veins and tremendously help save the stone supplies on the Earth.

They are lightweight, finely thin, extremely flexible and very safe in usage. As a result, you can apply them at various decorative places such as high wall, kitchen and furniture; and on diverse base textures such as aluminium, wood, concrete and glass.

Adal Home® proudly provide Art Stone® in the Vietnamese market, which will open a new wide range of beautiful, durable and well-priced decorative stone options. More importantly, we wish to create a new green habit of using Art Stone® to protect the environment.

This exclusive **Art Stone® Installation** Manual will guide you step-by-step through the very easy installation process.

Thank you very much.



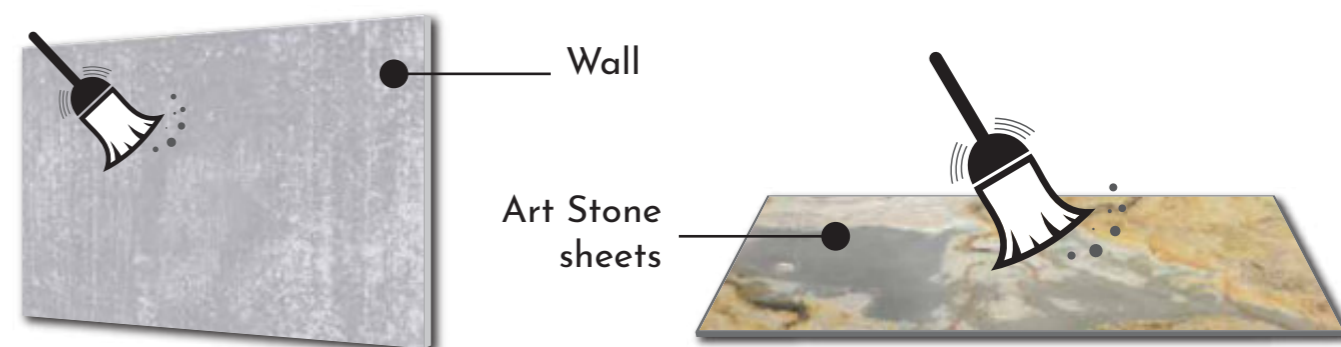
Prepare

Material & tools



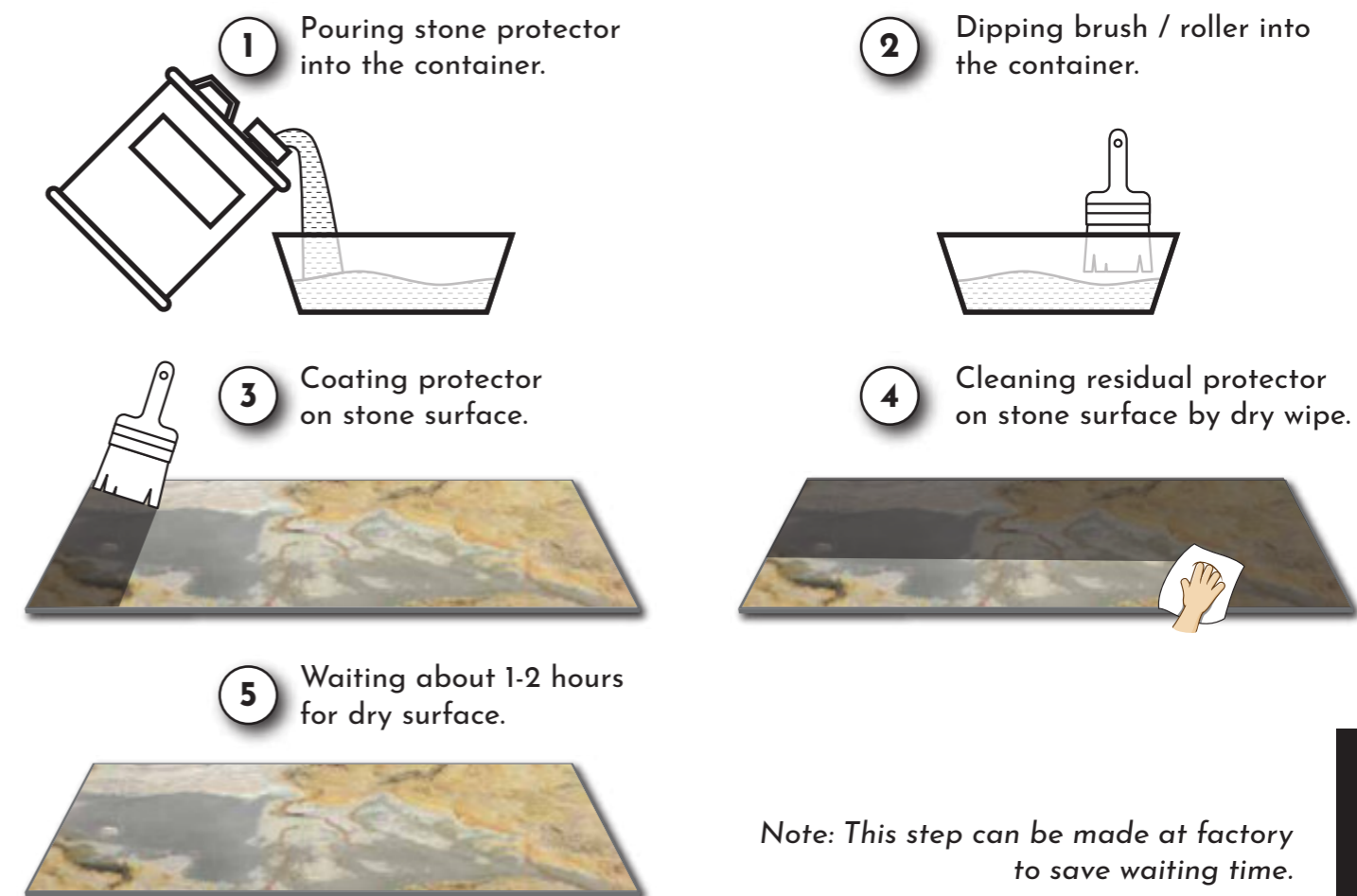
1. Art Stone sheets
2. Stone protector
3. Glue
4. Roller / brush
5. Wipe
6. Sanding papers
7. Cutting tools
8. Other tools
9. Safety equipments

Cleaning applied surfaces



Cleaning walls and Art Stone sheets by broom, water or wipe. Make sure that all of surface are dry before doing next steps.

Coating

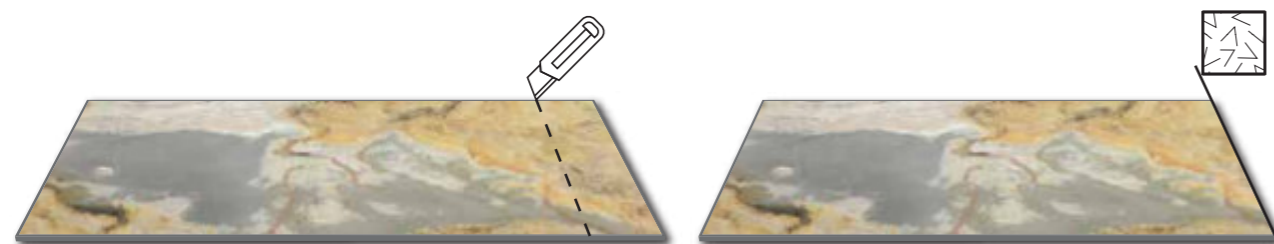


Note: This step can be made at factory to save waiting time.

Installation Manual



Cutting

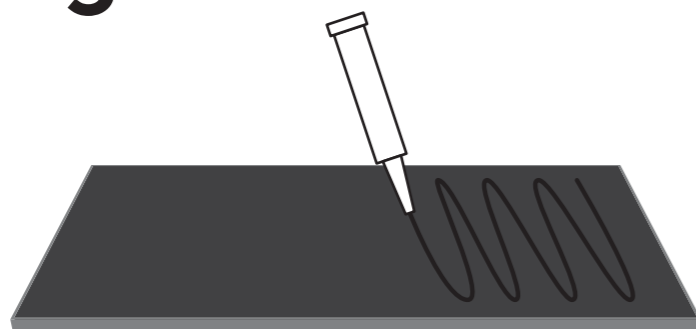


1 Cutting stone sheet with size which you need.

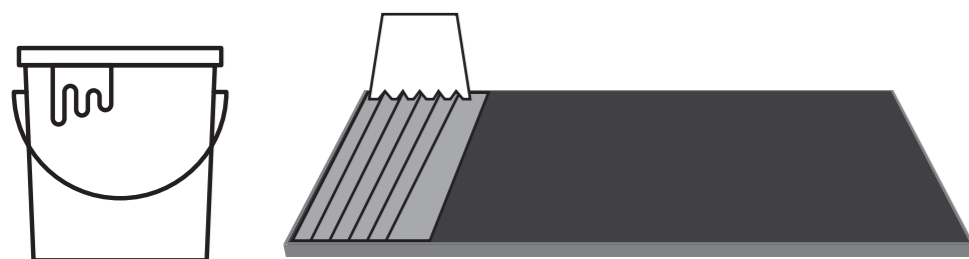
2 Sanding the newly trimmed edges for smooth.

Note: You can use other cutting tools (e.g saw, scissors, ect.) for this step.

Applying Glue



Or

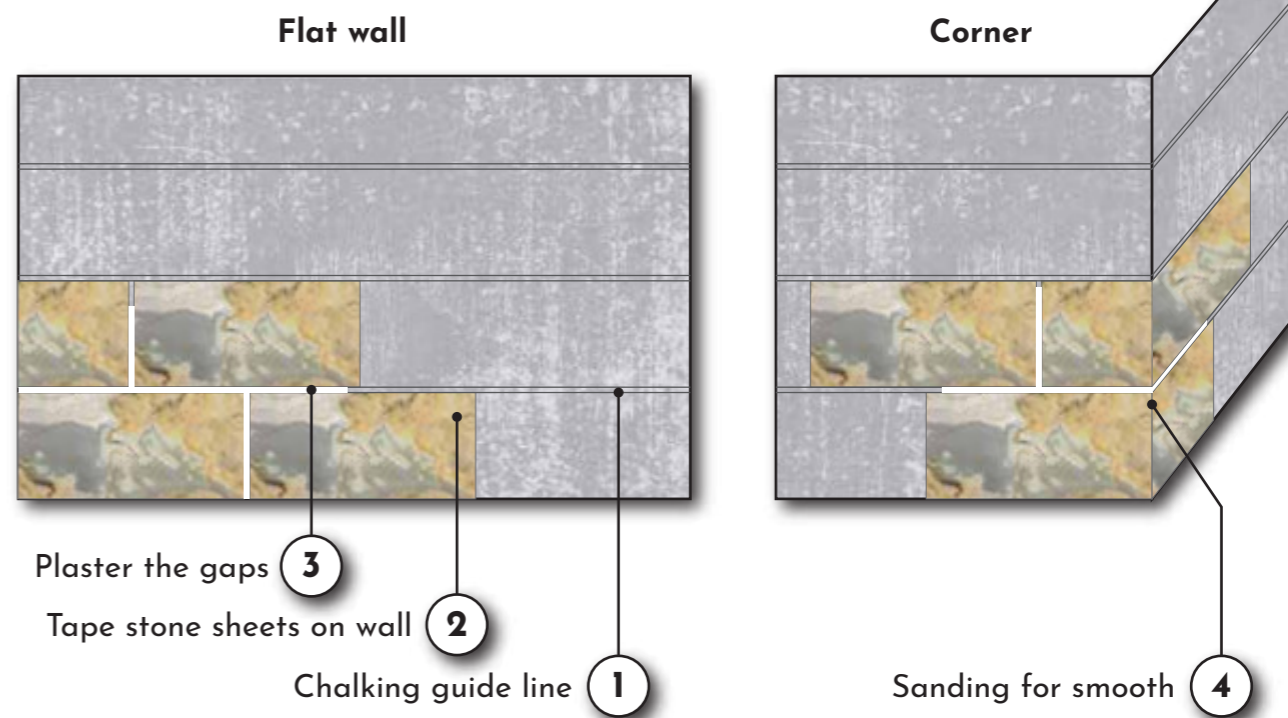


Applying glue directly from a tube or by notched trowel. The glue should be stretched full of stone sheet. With multi-component glue, should mix them before using.

Installation Manual

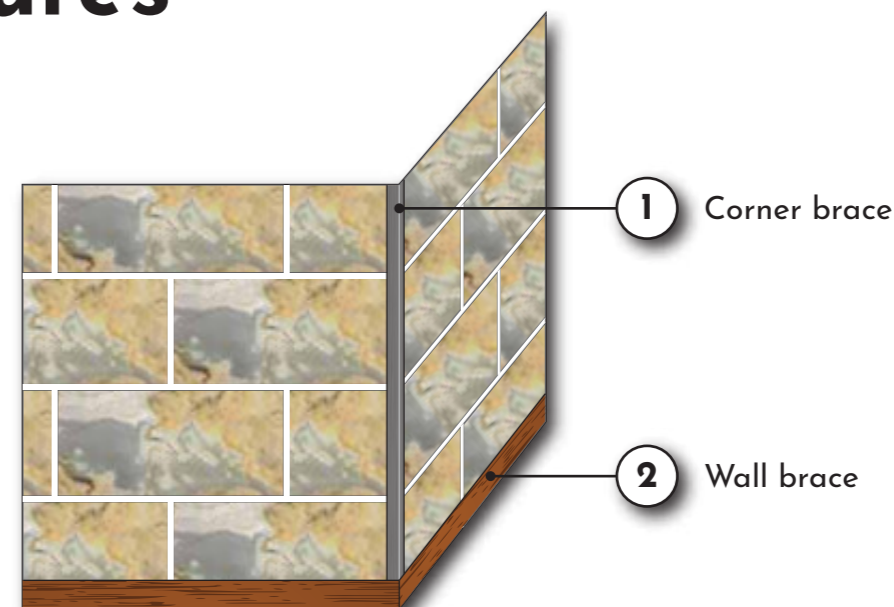


Tape on



Note: Thickness of gaps between tiles base on your idea. Evenly, they can be zero.

Fixtures



Note: Many fixtures can be applied with Art Stone. Each of them will need a various installation way.